

In order for our technicians to properly identify your existing Raised Access Floor System, Pro Access will need the following photos and measurements:

**STEP ONE - FLOOR PANEL AND UNDERSTRUCTURE PICTURES**



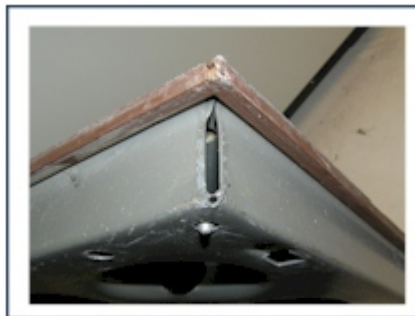
1. TOP OF FLOOR PANEL



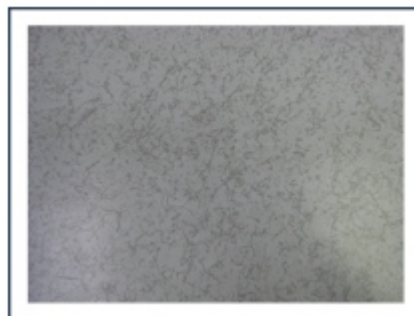
2. BOTTOM OF FLOOR PANEL



3. SIDE OF FLOOR PANEL



4. CORNER OF FLOOR PANEL



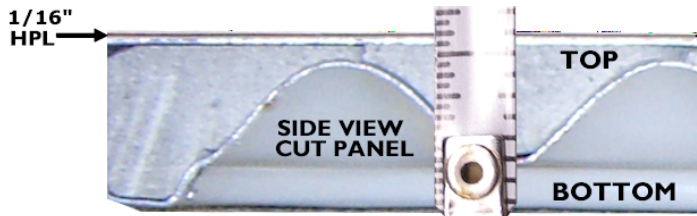
5. TOP FLOOR PANEL FINISH



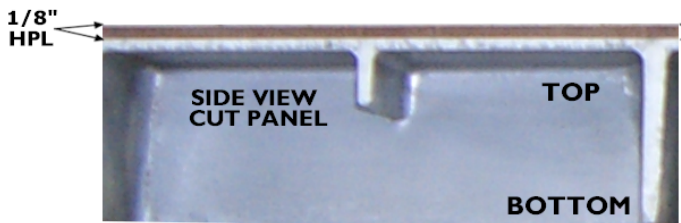
6. PEDESTAL & STRINGER

**STEP TWO - HPL AND PANEL THICKNESS**

Provide Pro Access with a close up picture (see example below) of the side of your access floor panel with tape measure or ruler placed top to bottom allowing us to see the measurements of the panel. Pro Access will need the Total HPL and Panel Thickness of your existing Raised Access Flooring Panels.



**HPL AND PANEL THICKNESS:** A majority of the raised floor panels have a HPL (High Pressure Laminate) surface. Measuring the HPL and Panel thickness is best accomplished with a cut access panel. In most cases HPL will be 1/16" or 1/8" thick. The HPL surface is usually adhered to a backing (usually black or brown in color). We need the measurement of both the HPL Sheet and the backing that is glued to the top metal surface of the panel. Some spare change is good tool for HPL measurement. If it is a similar thickness to a nickel it is 1/16" and a thickness similar to (2) nickels is 1/8". Providing Pro Access with a clear and close up photo with a tape measure or ruler reference (like displayed to the left) can greatly assist us in obtaining these measurements and finding the perfect match.



Email your photos to [photo@datacenterpro.com](mailto:photo@datacenterpro.com) or upload your files on our web site at: <http://upload.proaccessfloors.com>